

Eclairage Sonorisation Photo



Eclairage Architectural



Eclairage

Projecteurs LED

DMX

3 PAR64
(540w)



2 PAR56
(48w)



2 PAR56
(30w)



2 PAR36
(30w)



2 PAR36
(30w)



8 PAR36
(100w)



8 PAR56
(288w)



6 rampes
(120w)



6 Spots RVB
télécommandés
(60w)

Eclairage

Blocs DMX

4 Voies
dispatch



4 Voies
dimer



Splitter
DMX 2 réseaux



Bloc Télécommande HF
8 voies



Répéteur
DMX 4 réseaux

Eclairage

DMX - Divers

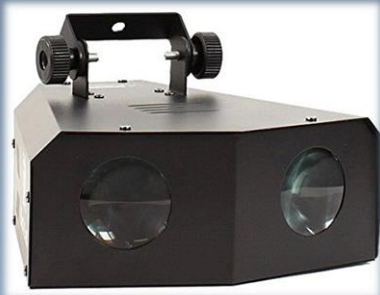
Chenillard



Lumières
Noires
2x60cm
1x120cm



Spots de couleurs



Générateur
De fumée
1500W



2x
Motif
Rouge



1x
Motif
Rouge



4x
Etoiles
Rouge
Vert



1x
Etoiles
Rouge
Vert
Bleu



Eclairage

Contrôleur

DMX

8 voies

24 voies



32 voies



96 voies



Logiciel Régie Eclairage - Son

mercredi 15 juin 2016 REGIE THEATRE DMX 512 - ZOU GRATENTOURS 01.rep

| DMX OFF | Licence | NEW | PARAMETRES SCENE | 1 | 5 | 7 | 13 | 17 | 19 | 25 | 29 | 31 | 37 | 45 | 53 | 61 | 65 | 67 | 73 | 80 | 84 | 86 | 92 | 99 | 100 | |
|------------|-----------------|-----|------------------|---|---|----|----|----|----|----|----|----|----|----|----|----|----|----|----|----|----|----|----|----|-----|--|
| Max Ch 104 | Remarque | LUM | SON | 4 | 6 | 12 | 16 | 18 | 24 | 28 | 30 | 36 | 44 | 52 | 60 | 64 | 66 | 72 | 79 | 83 | 85 | 91 | 98 | 99 | 104 | |
| 1 | NOIR | | | | | | | | | | | | | | | | | | | | | | | | | |
| 2 | ATTENTE | | | | | | | | | | | | | | | | | | | | | | | | | |
| 3 | FRISE | | | | | | | | | | | | | | | | | | | | | | | | | |
| 4 | MEME PAS BESOIN | | | | | | | | | | | | | | | | | | | | | | | | | |
| 5 | NOIR | | | | | | | | | | | | | | | | | | | | | | | | | |
| 6 | FRISE BLABLA | | | | | | | | | | | | | | | | | | | | | | | | | |
| 7 | MON ECLAT | | | | | | | | | | | | | | | | | | | | | | | | | |
| 8 | FRISE BLABLA | | | | | | | | | | | | | | | | | | | | | | | | | |
| 9 | LES ROSES | | | | | | | | | | | | | | | | | | | | | | | | | |
| 10 | FRISE BLABLA | | | | | | | | | | | | | | | | | | | | | | | | | |
| 11 | DREBKI | | | | | | | | | | | | | | | | | | | | | | | | | |
| 12 | FRISE BLABLA | | | | | | | | | | | | | | | | | | | | | | | | | |
| 13 | AFRICA CAN | | | | | | | | | | | | | | | | | | | | | | | | | |
| 14 | FRISE BLABLA | | | | | | | | | | | | | | | | | | | | | | | | | |
| 15 | B SLAMA | | | | | | | | | | | | | | | | | | | | | | | | | |
| 16 | FRISE BLABLA | | | | | | | | | | | | | | | | | | | | | | | | | |
| 17 | AALABELLI | | | | | | | | | | | | | | | | | | | | | | | | | |
| 18 | FRISE BLABLA | | | | | | | | | | | | | | | | | | | | | | | | | |
| 19 | REGGAE IN | | | | | | | | | | | | | | | | | | | | | | | | | |
| 20 | FRISE BLABLA | | | | | | | | | | | | | | | | | | | | | | | | | |
| 21 | BERBERAZI | | | | | | | | | | | | | | | | | | | | | | | | | |

reFlyXion

www.reflyxion.com

APC MINI 000000
nanoPAD2 000000
BCF2000 000000

0-1 5-20

Calibration

SON 000% LUM 000%

Black OUT

Eclairage pendant l'installation des spectateurs si nécessaire

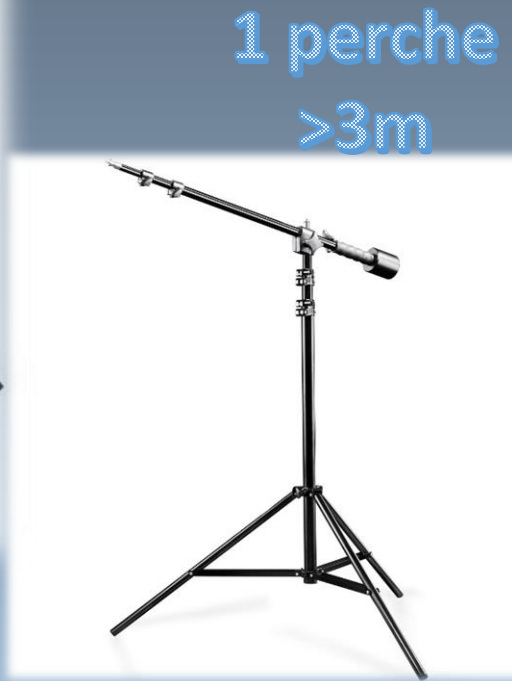
COPIE INS AV SUP 2 INS AP CREATION FIXTURE CHARGEMENT nanoPAD2 SAUVEGARDE

Eclairage

Supports



1 pont
4mx3m



1 perche
>3m



6 pieds
3m

1 pied
2,5m
Forte charge



Sonorisation



**Enceintes
1500W**



**Caisson Basse
1000W**

Ssnake MC164



**Ampli 1500W
Equalizer
Générateur d'effets**



Sono 400W



**Acquisition
16 voies numériques
PreSonus AudioBox
1818VSV
Focusrite OctoPre MkII
Logiciel Studio One 3**

Sonorisation

Mixage

DJ-Tech M-10



Xenyx 1202 Fx



Xenyx 1222 USB



Adaptateur
PDC22



Hercules Rmx



Vestax Spin



Sonorisation

Prise de son

Micro et casque
HF



Perche micro



6 pieds micro



3 x



3 x



1 x



Micro de mesure



Enregistreurs portables

Digital Recorder

BR-80



Digital Recorder
R-05



Photo



Photo

